

AGC MO



For Immediate Release
April 19, 2016

For additional information, contact:
Barb Pierce (M2Pierce), 314.580.8593 (cell)
Denise Hasty (AGC), 314.480.3181

BUILDING AND HIGHWAY CONTRACTORS REPORT RENEWED OPTIMISM FOR MISSOURI'S BUILDING CLIMATE

Highway Contractors' Outlook Jumps 27 Points on Passage of Federal FAST Act

ST. LOUIS—Missouri's highway and building contractors report higher expectations for the construction industry's economic outlook in a recent AGC of Missouri Contractor Confidence Index (CCI), looking six, 12 and 18-24 months ahead. The AGC of Missouri's CCI Index was conducted online and at meetings in early April with member contractors, and compares to data collected three months ago.

Contractors in the AGC of Missouri's Heavy/Highway/Infrastructure Division report a marked increase in their prospects over the next 24 months, rising 21 points in short-term confidence (six months), 16 points in the near term (12 months), and jumping nearly 27 points for 18-24 months, based on a 100-point index. Results over 50 points are considered trending positive, with the results coming in at 63.54 pts. (six months), 68.75 pts (12 months), and 59.52 pts. (18-24 months).

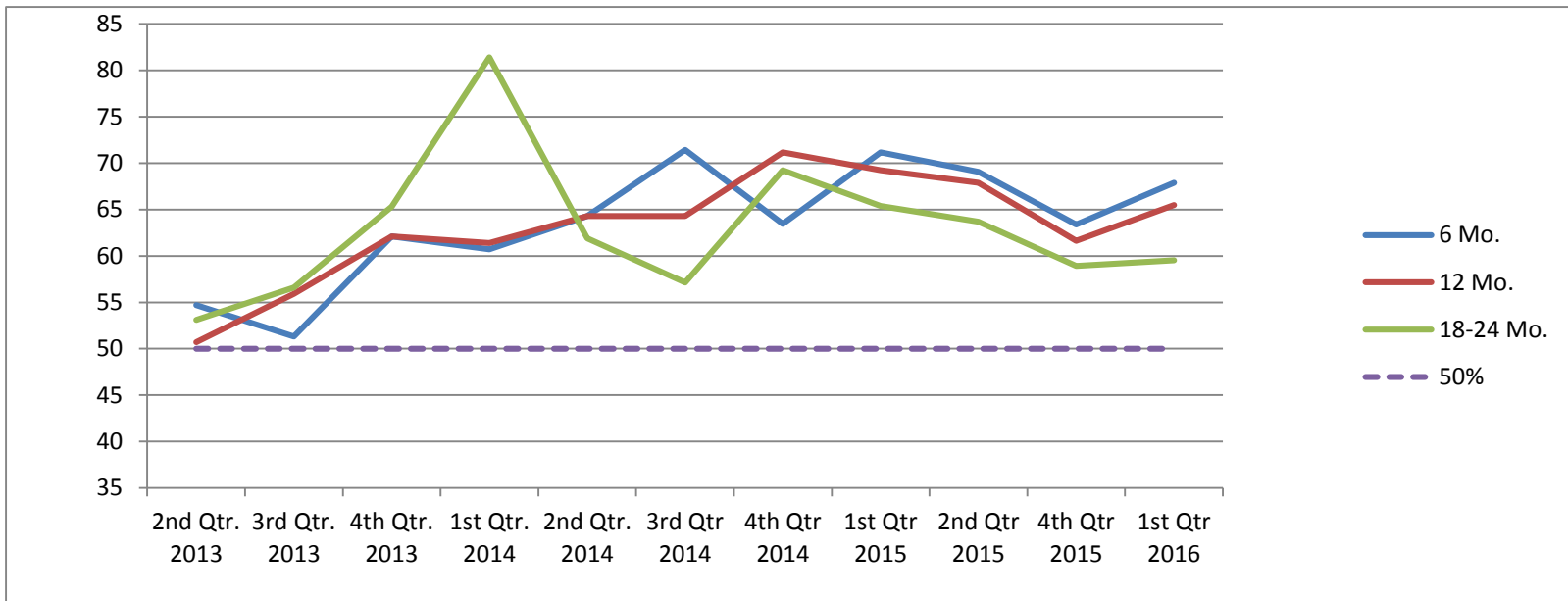
Leonard Toenjes, CAE, president of the AGC of Missouri, attributes the remarkably higher outlook in part to passage of the Fixing America's Surface Transportation (FAST) Act in December that provides funding for federal highway projects for the next five years. "Washington still hasn't solved the long-term prospects for funding infrastructure, but at least they saw their way clear to provide budget predictability for the next five years. Now Missouri needs to step up to the plate and resolve our state's challenge of crumbling bridges and highways like I-70, which is falling into serious disrepair. Unfortunately, Missouri still ranks 4th highest in the nation in the number of structurally deficient bridges and the 11th highest in the nation in percentage of structurally deficient bridges. Not only is this a safety issue, but these rankings hurt our prospects for attracting new business and commerce."

At the same time, commercial contractors in the AGC of Missouri's Building Division report improved expectations going forward. Their outlook rose nearly 4.5 points for the short term (six months), increased nearly 4.0 points near-term (12 months), and rose one-half point for the longer term (18-24 months). The favorable results were: 67.86 pts (six months), 65.48 pts. (12 months), and 59.52 pts. (18-24 months).

"We are happy that all trends are positive, but, unlike 28 other states that showed employment growth between February and March 2016, Missouri shed 2,000 construction jobs during the same period," added Toenjes. "While other parts of the country have seen a full recovery in the building

industry, Missouri has been lagging in its recovery, but it is still a recovery. We have grown employment by four percent, or 4,500 jobs, since March 2015. All signs point towards a continuing recovery with the announcement for such long term projects as the National Geospatial-Intelligence Agency (NGA) facility. We are thankful for that.”

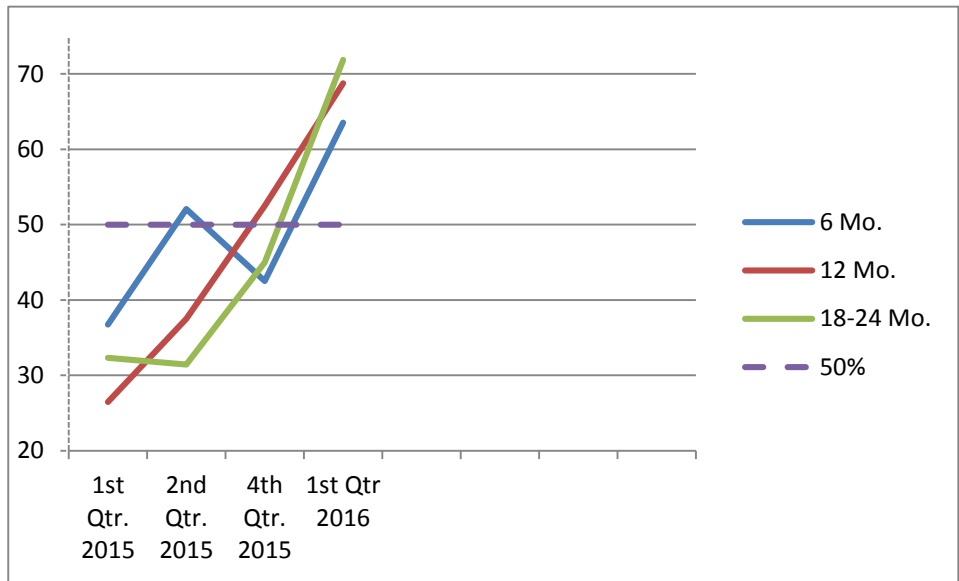
Building Division	2nd Qtr. 2013	3rd Qtr. 2013	4th Qtr. 2013	1st Qtr. 2014	2nd Qtr. 2014	3rd Qtr. 2014	4th Qtr. 2014	1st Qtr. 2015	2nd Qtr. 2015	4th Qtr. 2015	1st Qtr. 2016
6 Mo.	54.7	51.3	62.1	60.7	64.3	71.43	63.46	71.15	69.05	63.39	67.86
12 Mo.	50.7	55.9	62.1	61.4	64.3	64.29	71.15	69.23	67.86	61.61	65.48
18-24 Mo.	53.1	56.6	65.3	81.4	61.9	57.14	69.23	65.38	63.69	58.93	59.52
50%	50	50	50	50	50	50	50	50	50	50	50



- 6 Mo. How would you gauge the likely construction business conditions 6 months from now?
- 12 Mo. How would you gauge the likely construction business conditions 12 months from now?
- 18-24 Mo. How would you gauge the likely construction business conditions 18-24 months from now?

Above graph is based on a 100 point basis.

HHI Division	1st Qtr. 2015	2nd Qtr. 2015	4th Qtr. 2015	1st Qtr 2016				
6 Mo.	36.76	52.08	42.5	63.54				
12 Mo.	26.47	37.5	52.5	68.75				
18-24 Mo.	32.35	31.42	45	71.88				
50%	50	50	50	50				



This survey was developed by the AGC of Missouri and was distributed online as well as in-person at recent meetings to member contractors. The CCI index is released quarterly* and is designed to be an additional tool to help business, government and institutional leaders plan for the future.

*Due to scheduling difficulties, no 3rd Q 2015 survey was conducted.

About the AGC of Missouri

The Associated General Contractors (AGC) of Missouri is the largest organization representing the united voice of the construction industry throughout the state of Missouri. AGC of Missouri represents over 500 commercial, industrial, heavy and highway contractors, industry partners and related firms in 110 counties across the state of Missouri. AGC of Missouri operates offices in St. Louis and Jefferson City. Visit: www.agcmo.org