

BUILDING UNION DIVERSITY (BUD) PROGRAM

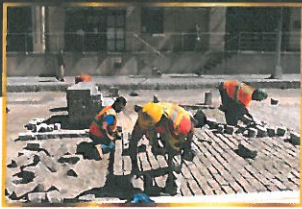
CONSTRUCTION

JOBS

CURRENTLY
ACCEPTING
APPLICATIONS

TRAINING FOR PERSONS WITH NO
CONSTRUCTION EXPERIENCE

MINORITIES
AND WOMEN,
WELCOME!



GET A JUMP START INTO CONSTRUCTION CAREERS.

TO ENROLL:

Complete an application and assessment, Monday – Friday, from 9 am to 4 pm at American Job Center locations:

- 1520 Market St, 3rd Floor, St. Louis, MO 63103, or
- 26 North Oaks Plaza, St. Louis, MO 63121

TRAINING FOCUS:

- Work and learn alongside industry experts
- Gain awareness of participating construction trades
- Learn OSHA/safety standards
- Identify a trade that best suits your interest and abilities

PARTICIPATING TRADES:

ST. LOUIS BUILDING
CONSTRUCTION TRADES
COUNCIL

CARPENTERS DISTRICT
COUNCIL

LABORERS EASTERN
DISTRICT COUNCIL

RECOMMENDED PARKING FOR SLATE LOCATION: Kiel Center Garage, situated immediately behind our building, at the corner of Clark & 16th. Fees: \$1.5 per hour.



Francis G. Slay, Mayor

ST. LOUIS AGENCY ON TRAINING AND EMPLOYMENT
SLATE
americanjobcenter



americanjobcenter
Saint Louis County



SLATE is an equal opportunity employer/program.

Auxiliary aids and services are available upon request to individuals with disabilities. Missouri Relay Services at 711.